

# EVO<sup>7.0</sup>

SOLAR POWERED BOAT



# EVO<sup>7.0</sup>

## SOLAR POWERED BOAT

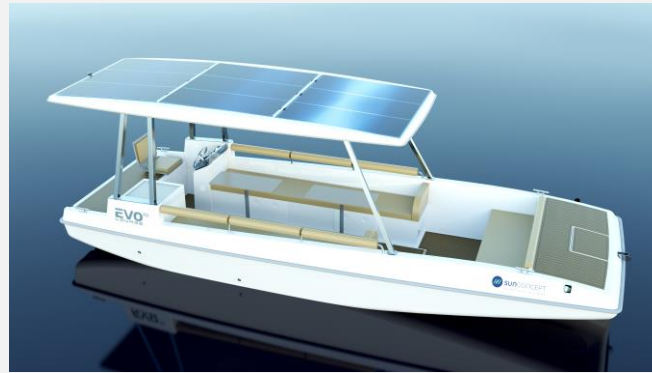
The Sun Concept EVO 7.0 is suitable for protected coastal areas and lagoon and riverside areas, where noise, pollution and stress caused by the agitation are factors that destabilize and devalue the landscape and well-being.

The Sun Concept EVO 7.0, in any of its versions, favours habitability and comfort on board for its passengers, while allowing for a calm and quiet navigability. Being ecosystem-friendly, it moves harmoniously, without the emission of polluting gases, without consumption of fossil fuels and without spilling oil into the water.

# EVO<sup>7.0</sup> LOUNGE

## BASE EQUIPMENT

FURNITURE - LAYOUT LOUNGE / COMFORT (ACCORDING TO VERSION) | COUNTERTOP WASHBASIN | EVA DECK | COMPLIMENTARY LED LIGHTING | HORN | LED NAVIGATION LIGHT SET | BASEMENT PUMPING SYSTEM | MECHANICAL GOVERNANCE SYSTEM | 12VDC ELECTRICAL CONTROL AND NAVIGATION SYSTEM | SYSTEM MONITORING - VICTRON CERBO GX | COMFORT UPHOLSTERY (COMFORT VERSION) | FUSION MS RA55 - FM RADIO KIT, BLUETOOTH AND SPEAKER (COMFORT VERSION) | STANDARD / COMFORT UPHOLSTERY (ACCORDING TO VERSION) | LED DECK LIGHTING | COASTAL ACCESS LADDER | LED NAVIGATION LIGHTS | 9 150W SUNPOWER SOLAR PANELS | VICTRON GX Touch 50 DISPLAY | PLUMBING AND WASTE SYSTEM | 230VAC ELECTRIC SYSTEM FOR ONBOARD LIFE | VICTRON GSM and GPS MODULE | REFRIGERATOR 65lt (COMFORT VERSION) | BIOCIDES FREE BACKGROUND PAINTING



It is fundamentally designed for tourist maritime operations, favouring the space for users and a position for the Skipper that allows a complete view of the vessel, facilitating the coordination of passengers.

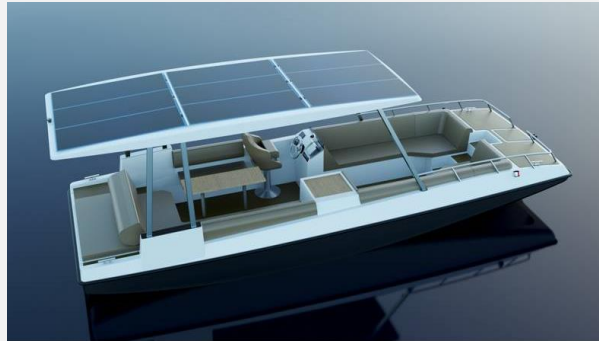
The Lounge version also offers two levels of finishes, the **Lounge** and the **Lounge Comfort**, in order to allow a better adjustment to the type of operation in which it will be used.

## A BRIGHTER FUTURE IS WITH SMARTER ENERGY

# EVO<sup>7.0</sup> CRUISE

## BASE EQUIPMENT

FURNITURE - CRUISE LAYOUT | STORAGE BOX | COUNTERTOP WASHBASIN | FUSION MS RA55 - FM RADIO KIT, BLUETOOTH AND SPEAKER | AFT ACCESS LADDER | LED NAVIGATION LIGHTS | 9 150W SUNPOWER SOLAR PANELS | LED NAVIGATION LIGHT SET | BASEMENT PUMPING SYSTEM | MECHANICAL GOVERNMENT SYSTEM | 12VDC ELECTRICAL CONTROL AND NAVIGATION SYSTEM | SYSTEM MONITORING - VICTRON CERBO GX | COMFORT UPHOLSTERY | REFRIGERATOR 65lt | LED DECK LIGHTING | EVA DECK | COMPLIMENTARY LED LIGHTING | HORN | 8 Rolls 12V/290th BATTERIES | VICTRON GX Touch 50 DISPLAY | PLUMBING AND WASTE SYSTEM | 230VAC ELECTRIC SYSTEM FOR ONBOARD LIFE | VICTRON GSM and GPS MODULE | BIOCIDES FREE BACKGROUND PAINTING



With a generous deck space, the Cruise is refined in its finishes, offers more comfort, and has a more intimate layout, aimed mainly at the private user.

The EVO 7.0 Cruise was designed to provide you with unforgettable days on board, with family or friends. Enjoy a meal inside, enjoy a sunset, dive in refreshing waters or simply cruise the waters.

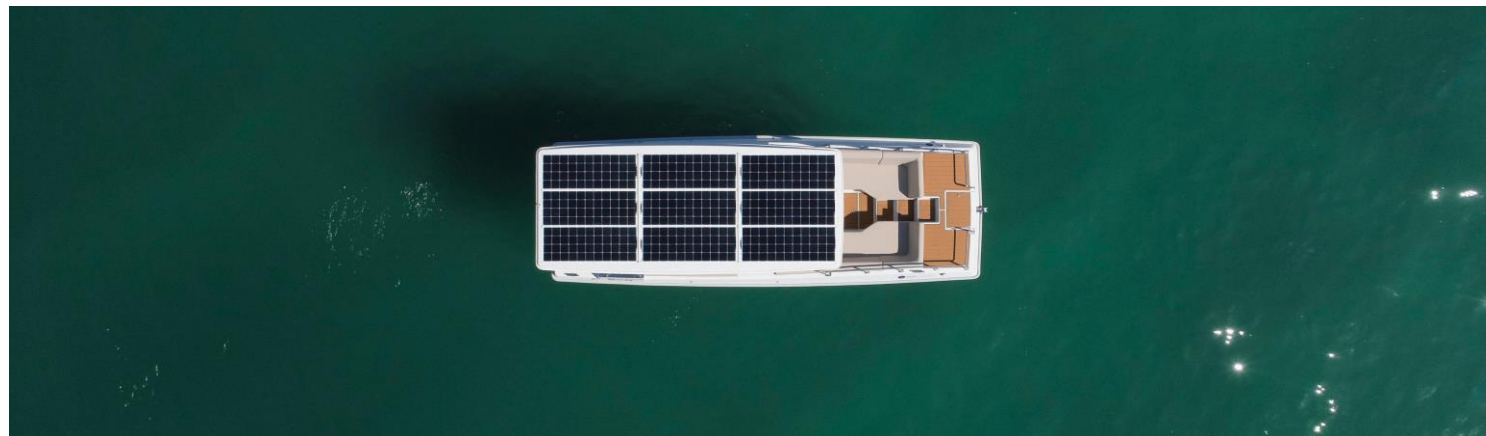
However, it is also a great option for tourist maritime operations whose users demand a more personalized service.

## LIVE LIFE AND TREASURE EVERY MOMENT

# EVO<sup>7.0</sup>

SOLAR POWERED BOAT

LIVE IN NATURE  
AND SAFEGUARD ITS FUTURE



EVO 7.0 Cruise

## TECHNICAL SPECIFICATIONS

**LENGTH OVER ALL** 7,10 METRES | **LENGHT OF THE WATERLINE** 6,90 METRES | **BEAM** 2,40 METRES | **DEPTH** 1,10 METRES | **DRAFT** 0,50 METRES | **LIGHTSHIP WEIGHT** 1.85 T | **AUTONOMOUS POWER PRODUCTION** 1350 W peak | **BATTERIES** 8 Rolls 12V /290 A | **MOTORIZATION** 2 ELECTRIC MOTORS UP TO 6 KW 24 V | **RECOMENDED CRUISING SPEED** 6 KNOTS | **MAXIMUM SPEED** UP TO 7 KNOTS | **AUTONOMY AT CRUISING SPEED** UP TO 14 HOURS | **AUTONOMY AT MAXIMUM SPEED** UP TO 4 HOURS | **AUTONOMY AT REDUCED SPEED** UNLIMITED

## GENERAL SPECIFICATIONS

ZERO CO<sub>2</sub> | ZERO HYDROCARBONS DUMPED IN THE WATER | ZERO FOSSIL FUELS | REDUCED TO NO IMPACT ON THE ECOSYSTEM | MORE SPACE AND COMFORT FOR THE PASSENGERS | SELF-SUSTAINABLE | HIGH AUTONOMY | EASY NAVIGABILITY AND MANEOUVRABILITY | COMFORTABLE CRUISING SPEED | EFFECTIVE REDUCTION OF THE OPERATIONAL COSTS | SIGNIFICANT REDUCTION AND SIMPLIFICATION OF THE OPERATIONAL COSTS



# EVO<sup>7.0</sup>

SOLAR POWERED BOAT

**Choose the version that best suits  
your nautical experiences**

The evolution of technology associated with the knowledge of Sun Concept, enhances the existence of optimized vessels, friendly to the ecosystem, with a harmonious navigation, without emission of polluting gases, without consumption of fossil fuels and without spilling oil into the waters. Only the Sun is needed as a source power.

The vessels are optimized for a cruising speed between 6 and 7 knots, obtained from two 6 kW electric motors, powered by 27.8 kWh batteries, charged by 9 150W solar panels with 1350Wp.



**CRUISE**



**LOUNGE**

# EVO<sup>7.0</sup>

SOLAR POWERED BOAT





# EVO<sup>7.0</sup>

SOLAR POWERED BOAT



Parque Industrial da Mitrena  
Rua Esteiros das Raparigas, 18  
2910 -738 SETÚBAL  
PORTUGAL

 +351 911 908 540

 [info@sunconcept.pt](mailto:info@sunconcept.pt)

Co-financed by:

